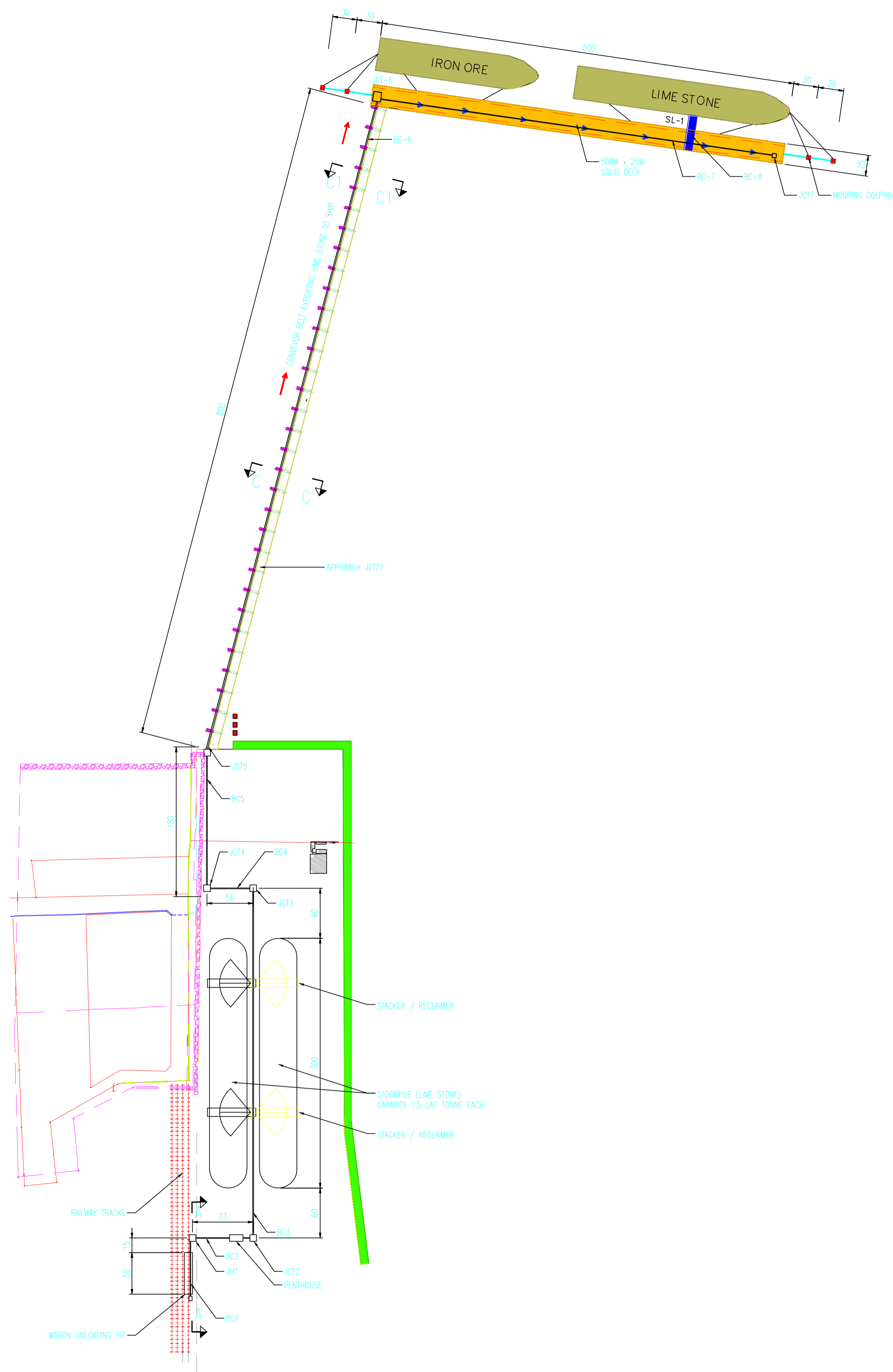
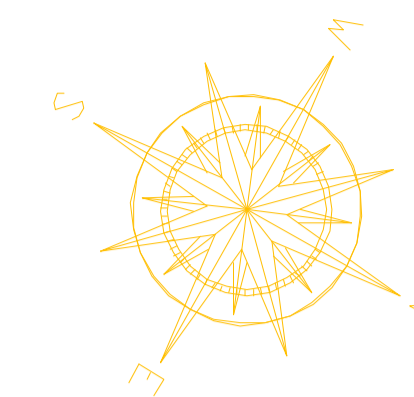


COPY RIGHT RESERVED

No part of this drawing may be reproduced, stored in a retrieval system or transmitted in any form or by any means, electronic, mechanical photocopying, recording or otherwise without prior permission of the Consultant



GENERAL LAYOUT PLAN SHOWING LIME HANDLING ARRGT.
FROM WAGON UNLOADING PIT TO SHIP LOADING

REV.	DESCRIPTIONS	DCR NO.	DATE

DRAWING ISSUE FOR:

DESIGNED BY:	ANIL SETH
CHECKED BY:	ANIL SETH
APPROVED BY:	DEEPAK
DRAWN BY:	D.K.TYAGI
SCALE:	
DATE:	

CLIENT:



PENANG PORT SDN. BHD.
No. 1, King Edward Place,
10500 Penang
P.O. Box 1204,
10710 Penang, Malaysia

BOOT CONTRACTOR:

MUTIARA ETNIK SDN. BHD

PROJECT TITLE:

**DEVELOPMENT OF KUALA PRAI
TERMINAL (PBCT)**

DRAWING TITLE:

GENERAL LAYOUT PLAN SHOWING LIME HANDLING ARRGT.
FROM WAGON UNLOADING PIT TO SHIP LOADING

DRAWING NUMBER:	REV.
MUT-PNG-01	